



ZIPPITY

Easy Does It!

MADISON VINYL GATE KIT WITH FENCE WINGS (62" W X 30"H)

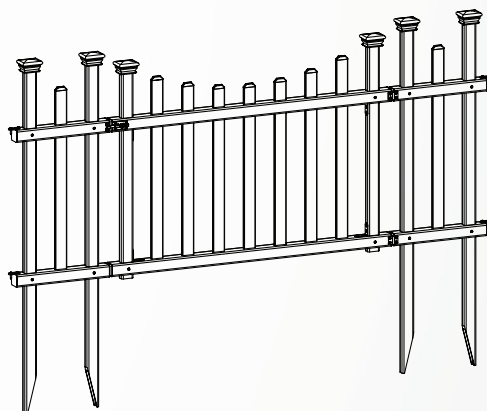
ASSEMBLY INSTRUCTIONS ZP19028

60 MIN

Approximate assembly time

Want to see a video on how to
assemble this product?

Scan the QR code



GENERAL INFORMATION



IMPORTANT

- ✚ Check the inside of the larger pieces in your box for other materials packed inside.
- ✚ When assembling components, place on a non-abrasive surface (i.e. shipping box) to avoid scratching.
- ✚ We recommend an area approximately 5'x 8' for unobstructed assembling.
- ✚ You should not need to use excessive force when assembling components.

MISSING OR DAMAGED PARTS?

VISIT OUR WEBSITE FIRST, SO WE CAN HELP YOU RIGHT AWAY!

Although great care has been taken to ensure proper packaging and handling of this product, occasionally problems occur. If you discover any missing, damaged or defective parts, please visit our website to order replacement parts. If you experience any further trouble with your product, please contact our customer service department.

 parts.nychbrands.com

 support@zippity-outdoor.com

 **704-892-5222 / 877-234-6196**

Customer service agents are available to take calls weekdays from 9am-5pm EST. If you call outside of business hours, please leave a voicemail.

To help you quickly and accurately, please have reference item number **ZP19028** and the specific part name which can be found on page 5. It is helpful if you can provide the batch lot which is a stamped number inside the box.

NEED ASSEMBLY HELP?

If you are having problems with the assembly or installation of this product, we are happy to assist you with the process, **so please give us a call at 704-892-5222 / 877-234-6196.**

NEED TO RETURN?

If for some reason you need to return this product, please allow us to help resolve your issues first. If you still decide to return the product, **you will need to initiate the return from the company you originally purchased from.**

GENERAL INFORMATION

1. Read over fence instructions first.

Your gate and fence will work better together if you first take the time to read and understand your fence.

2. Pre-assemble the gate frame.

Please do not screw the gate frame together until you have temporarily assembled the gate frame. In other words, do a dry run first. This will ensure:

1. That you have everything necessary to complete the gate.
2. That you will have assembled the gate frame in the correct order.
3. All of the pieces fit and function properly.
4. The gate height and width are similar to the measurements shown on page four.

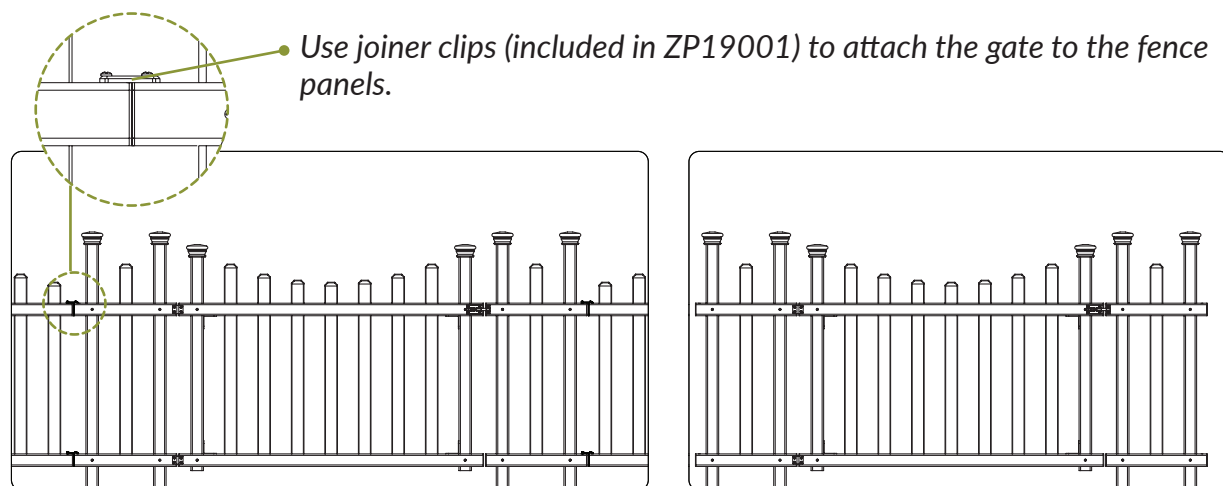
It's easier to troubleshoot when things are not screwed together. After you assemble your gate correctly, please disassemble as necessary, and use the included self-drilling stainless steel screws to permanently assemble the gate.

3. Install your gate posts before your fence posts.

Your fence panels will be more forgiving for a custom fit than your gate. Position and install your gate posts before you do anything else.

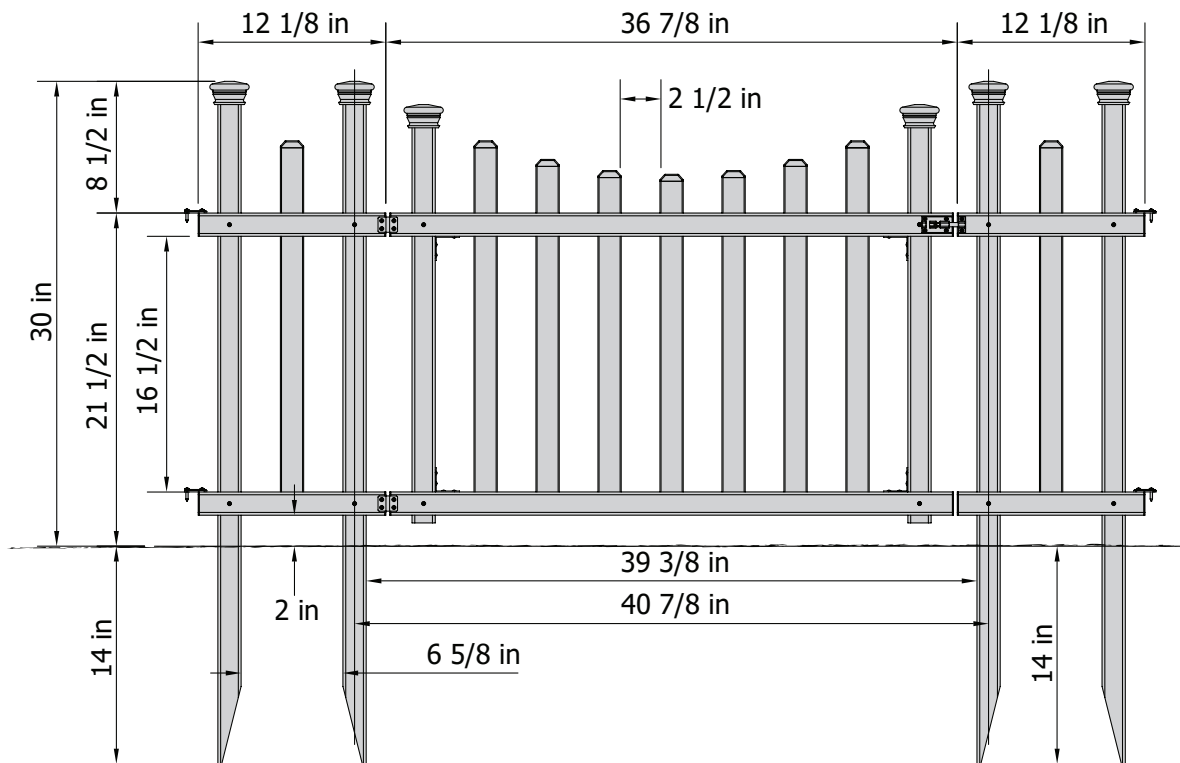
4. Do not hang your gate system off a single non-supported gate post.

Your gate will perform better and last longer if your hinge gate post is connected to a panel of fence that is connected to another gate post. This way, the weight strain will be transferred onto two gate posts versus just one. Installing fence panels on both sides of your gate is ideal in all situations. If this is not possible because of space restrictions, please contact us for alternative solutions.

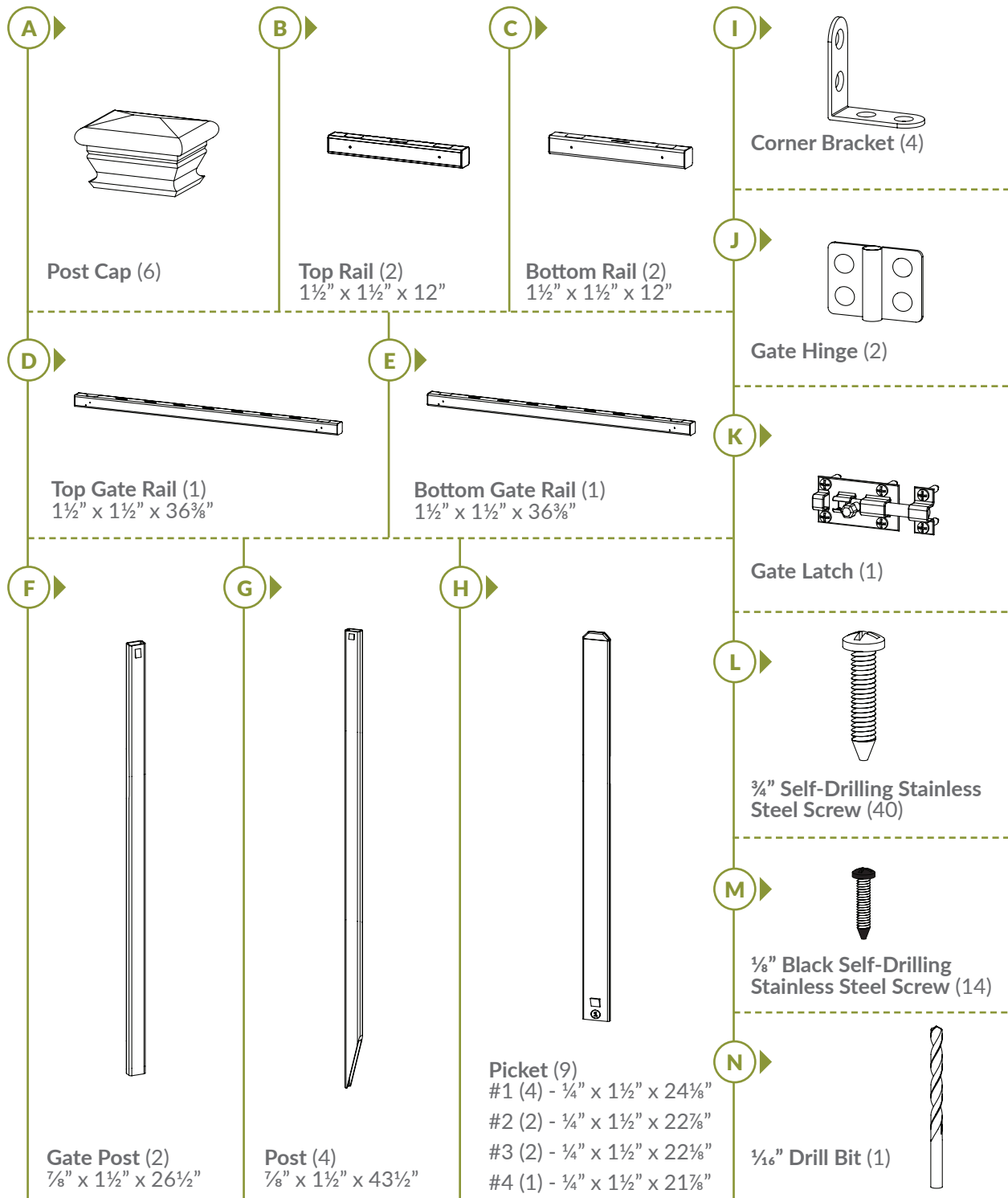


Detailed Product Dimensions & Specifications

Madison Vinyl Gate Kit w/ Fence Wings



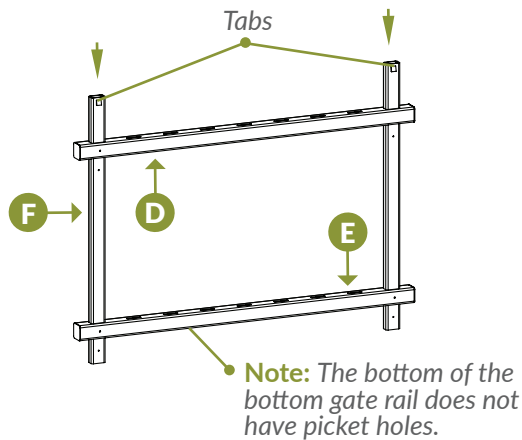
STEP 1: LAY OUT MATERIALS



STEP 2: ASSEMBLE GATE FRAME

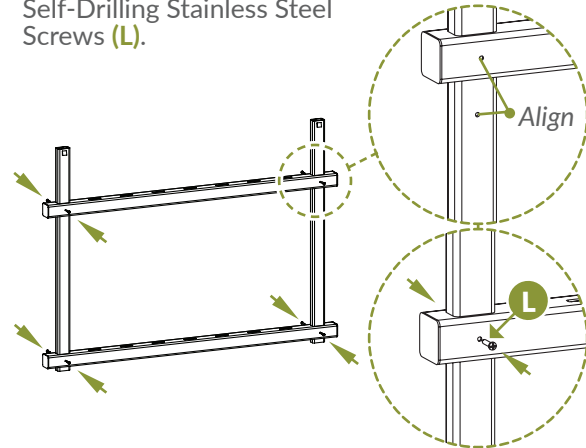
STEP 2.1

- Orient the Gate Posts (F) so the tab is facing up as illustrated. Insert the gate posts down through the Top Gate Rail (D) and Bottom Gate Rail (E) as illustrated.



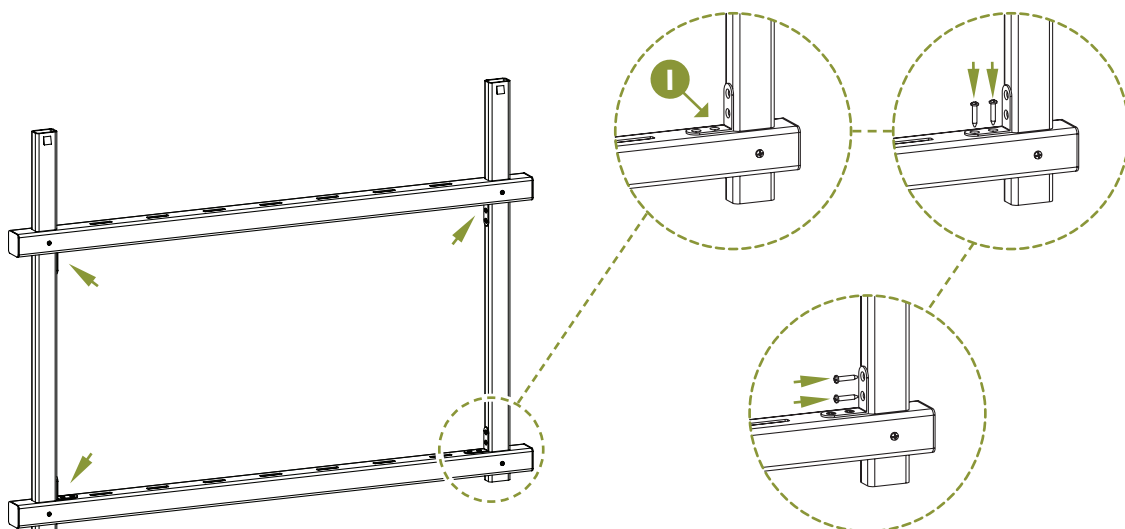
STEP 2.2

- Align the pre-drilled holes in the gate rails with the pre-drilled holes in the gate posts. Fasten together with (8) 3/4" Self-Drilling Stainless Steel Screws (L).



STEP 2.3

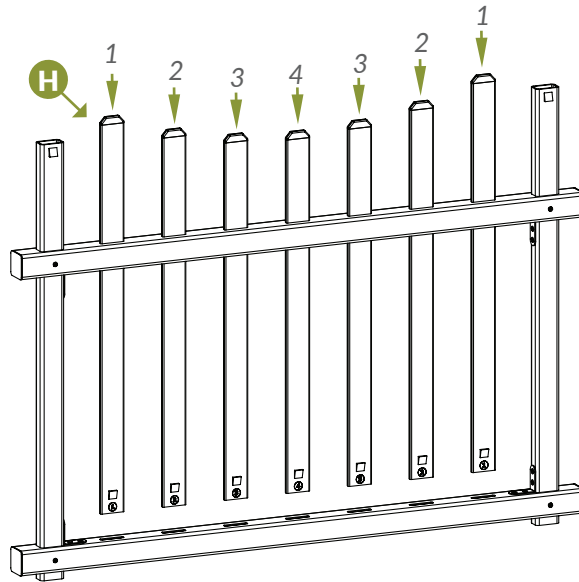
- Starting with one inside corner, place a Corner Bracket (I) against the bottom gate rail and gate post as shown. Fasten corner bracket with (2) 3/4" self-drilling stainless steel screws into the bottom gate rail. Fasten with (2) 3/4" self-drilling stainless steel screws into the gate post. Repeat for all four inside corners.



STEP 3: INSTALL PICKETS AND POST CAPS

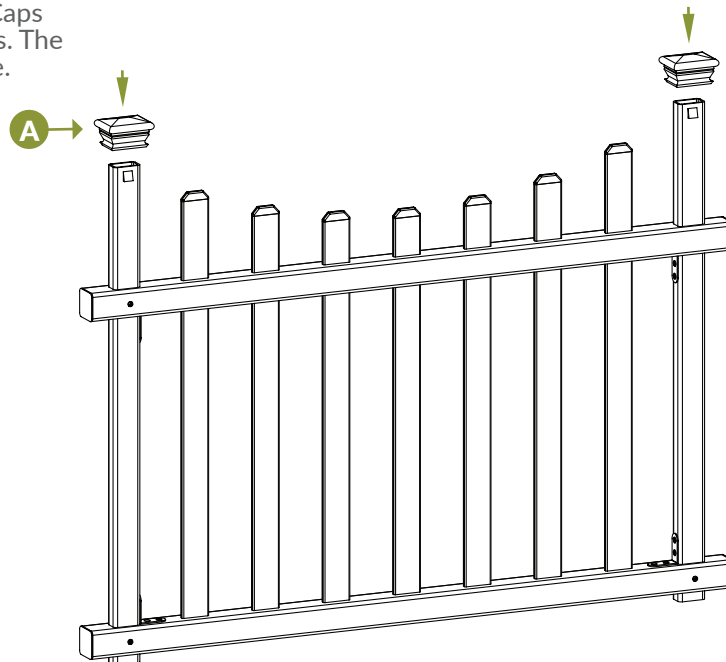
STEP 3.1 ▶

▶ Using the pattern illustrated, insert the Pickets (H) down through the top gate rail and bottom gate rail.



STEP 3.2 ▶

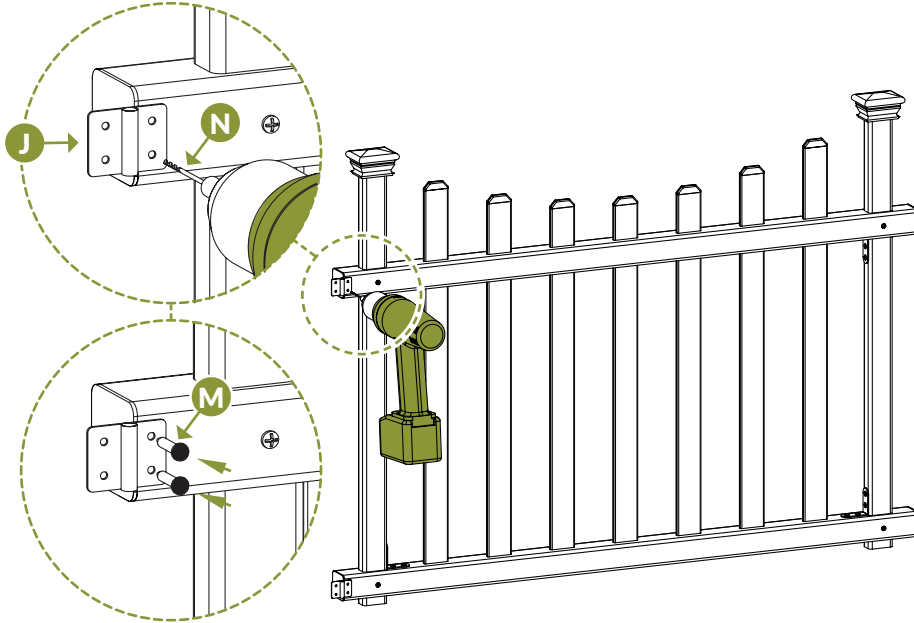
▶ Pressure fit (2) Gate Post Caps (A) down over the gate posts. The post caps will lock into place.



STEP 4: INSTALL HINGES AND LATCH

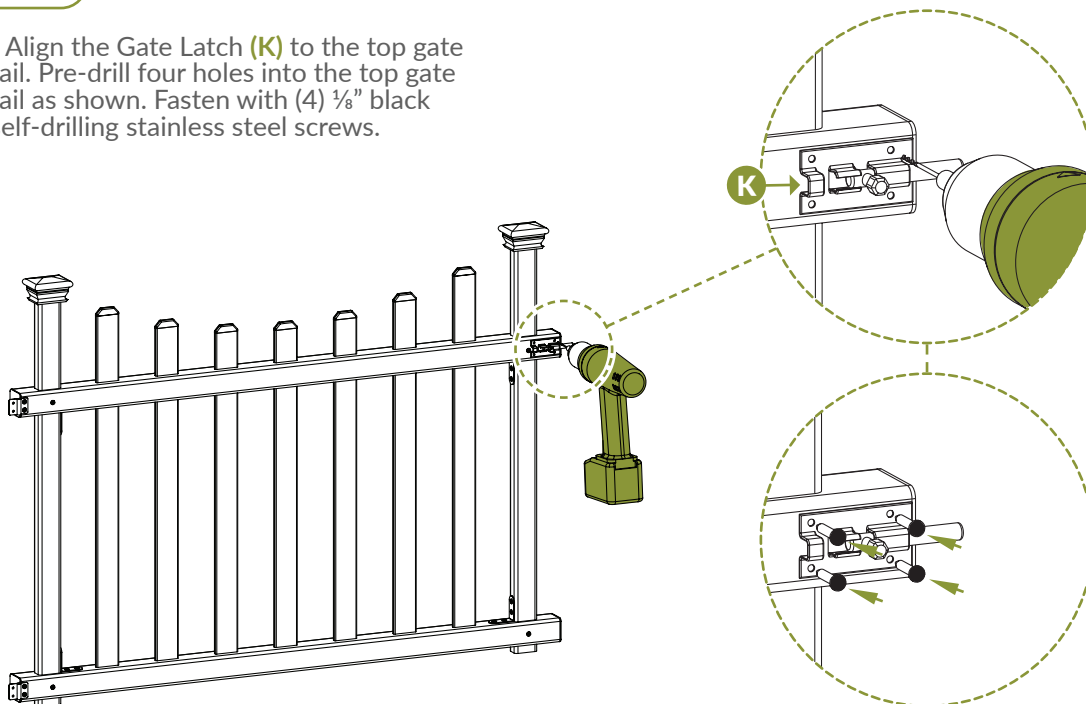
STEP 4.1 ▶

▶ Align the Gate Hinges (**J**) on the top and bottom gate rails as shown. Pre-drill two holes on the face of the gate rails for each gate hinge using the $\frac{1}{16}$ " Drill Bit (**N**). Holes should be about $\frac{1}{4}$ " from the edge of the gate rail. Fasten each gate hinge with (2) $\frac{1}{8}$ " Black Self-Drilling Stainless Steel Screws (**M**).



STEP 4.2 ▶

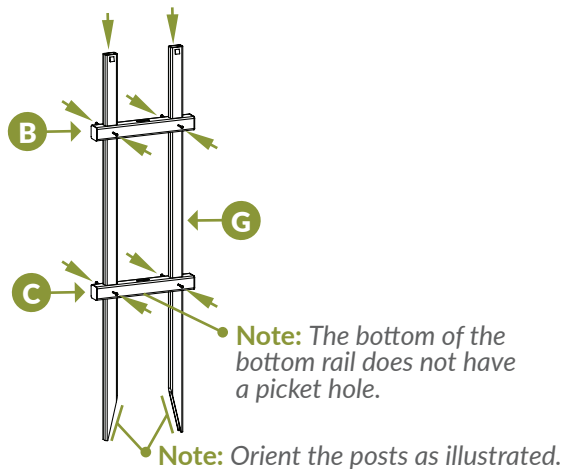
▶ Align the Gate Latch (**K**) to the top gate rail. Pre-drill four holes into the top gate rail as shown. Fasten with (4) $\frac{1}{8}$ " black self-drilling stainless steel screws.



STEP 5: ASSEMBLE GATE WINGS

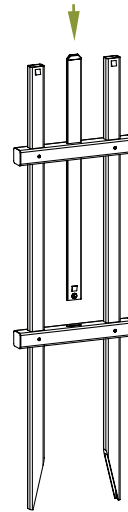
STEP 5.1 ▶

▶ Insert the Post (G) down through the Top (B) and Bottom Rails (C) as illustrated. Align the pre-drilled holes in the rails with the pre-drilled holes in the posts and fasten together with (8) $\frac{3}{4}$ " self-drilling stainless steel screws.



STEP 5.2 ▶

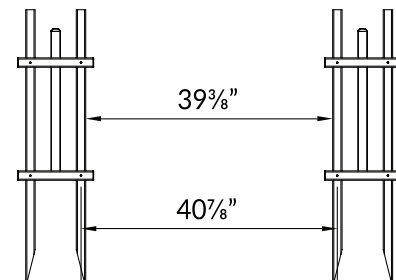
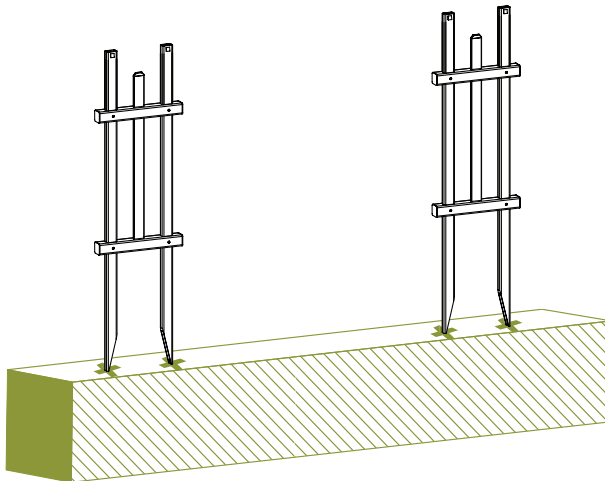
▶ Insert a picket (numbered 1) down through the top rail and into the bottom rail. Repeat for second gate wing.



STEP 6: INSTALL GATE WINGS INTO THE GROUND

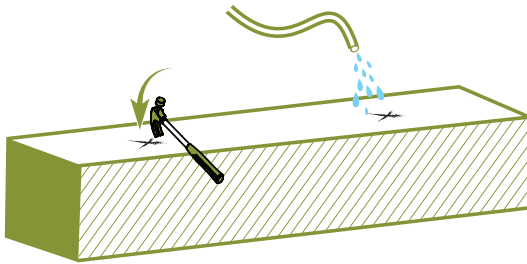
STEP 6.1 ▶

▶ Move the gate wings to their final location and identify the location of the posts. The distance between the posts should be $39\frac{3}{8}$ " or $40\frac{7}{8}$ " center-to-center.

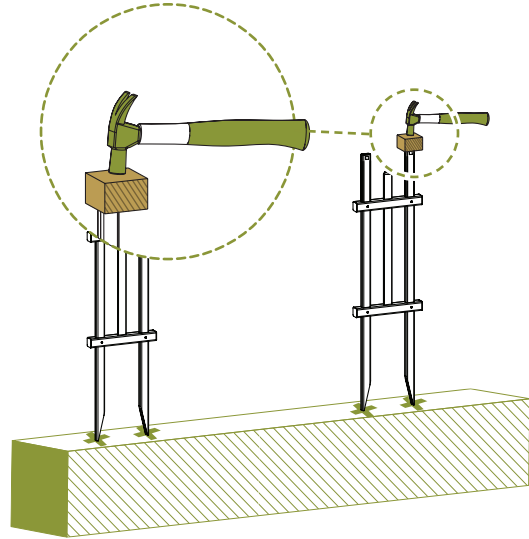


STEP 6.2 ▶

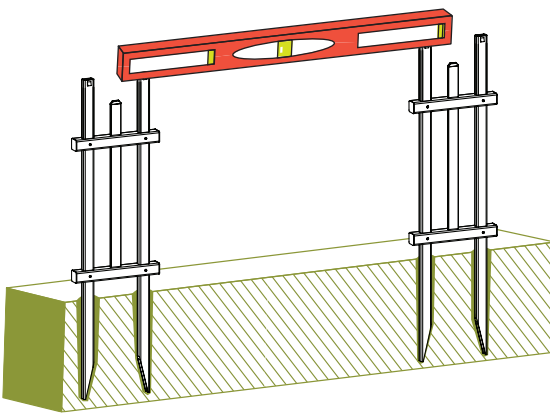
- ▶ Loosen the top 6" to 8" of the ground using a claw hammer as illustrated. Add water to loosen soil if necessary.

**STEP 6.3** ▶

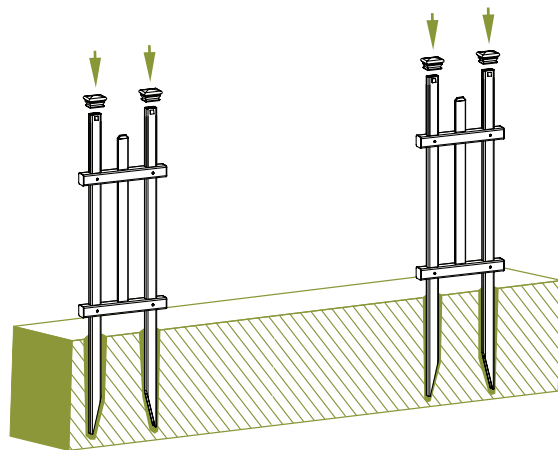
- ▶ Use a block of wood to protect the top of the post and gently hammer each post into the ground equally until the bottom rails are about 2" above the ground.

**STEP 6.4** ▶

- ▶ Level the assembled unit, backfill, and compact dirt around the base of each post to strengthen the unit.

**STEP 6.5** ▶

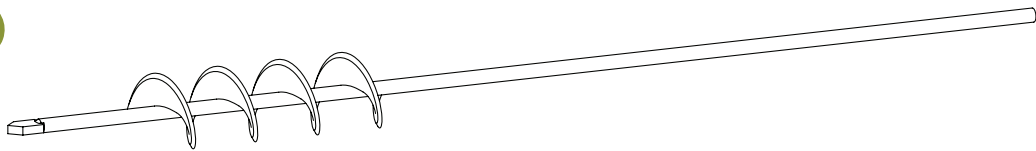
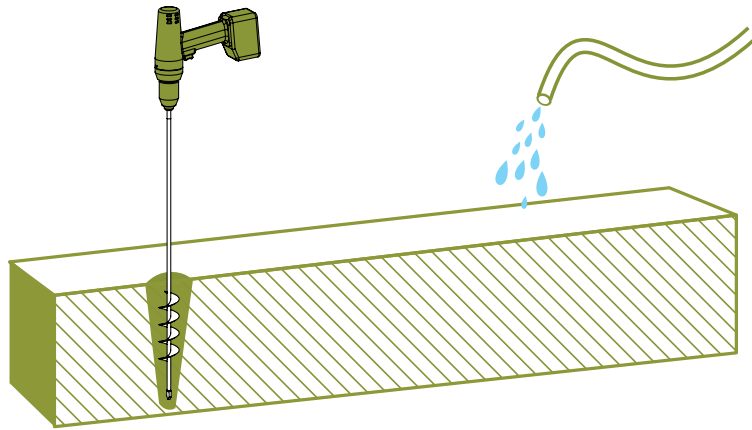
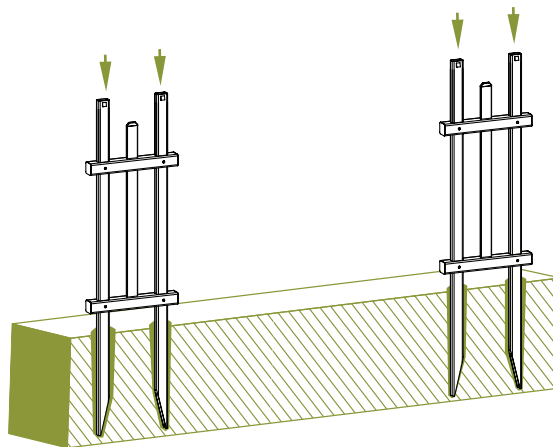
- ▶ Finish the assembly by pushing the post caps down over the top of the posts as illustrated. The post caps will lock into place.



STEP 6.6 ▶

► **Optional in hard ground:** If your ground is too hard, or you have more than 3 or 4 panels to install, please consider these options:

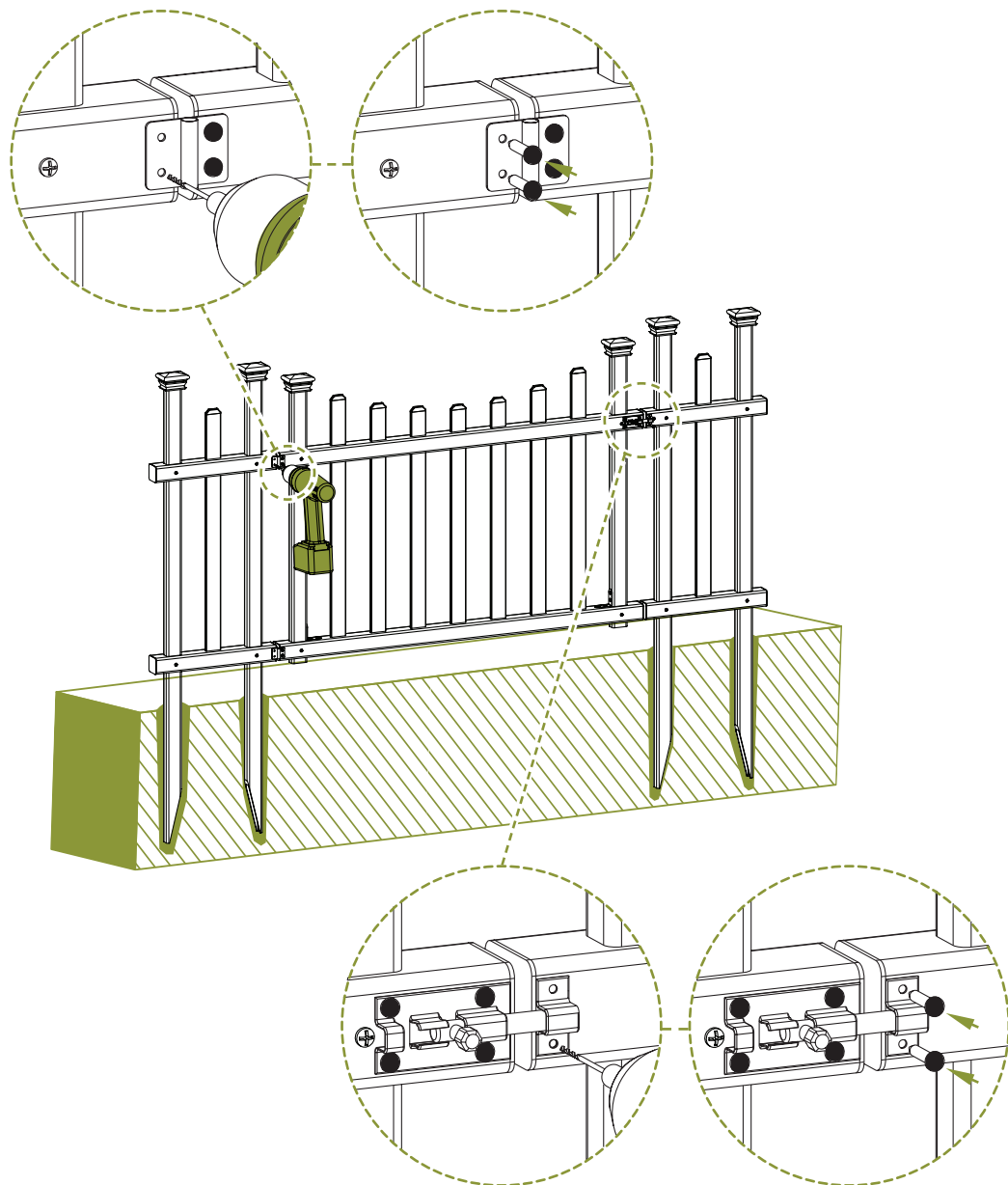
1. Use a 1¼" diameter auger bit (commonly used for planting tulips) as illustrated (\$15-\$20 on Amazon.com).
2. Drill a hole about 12" to 16" deep at the desired location, and fill the holes with water as illustrated.
3. Push the fence posts into the holes.

1**2****3**

STEP 7: INSTALL GATE

STEP 7.1 ▶

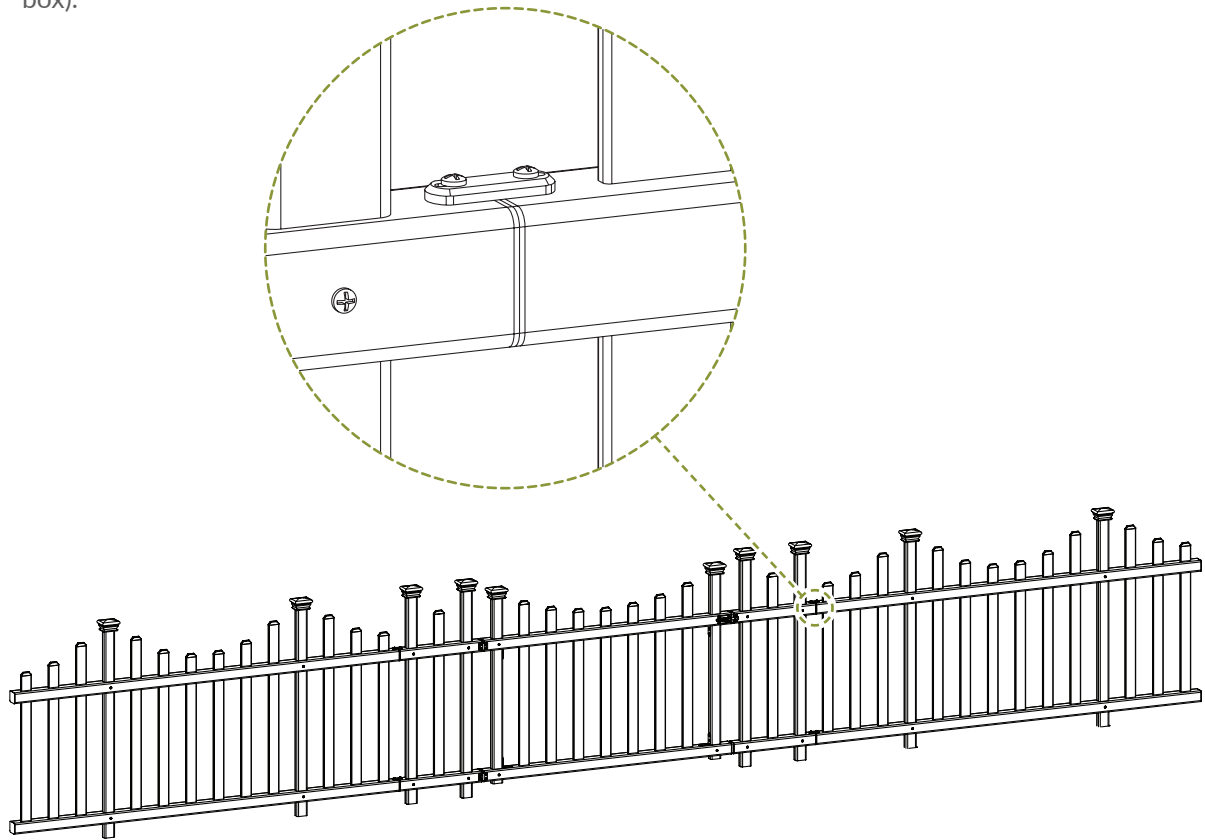
▶ Align the gate hinges against the rails of the gate wing as illustrated. Mark and pre-drill two holes for each gate hinge. Fasten each hinge with (2) $\frac{3}{8}$ " black self-drilling stainless steel screws. Lastly, align the gate latch catch as shown and pre-drill two holes into the gate wing rail, then fasten with (2) $\frac{1}{8}$ " black self-drilling stainless steel screws.



STEP 8: INSTALL FENCE PANELS

STEP 8.1 ▶

▶ Connect the top and bottom rails of the gate wings to the fence rails using joiner clips as shown (joiner clips are included in fence box).





ZIPPITY

Easy Does It!



6935 Reames Rd. Ste. K.
Charlotte, NC 28216



support@zippity-outdoor.com

704-892-5222
877-234-6196



WWW.ZIPPITY-OUTDOOR.COM