



ZIPPITY

Easy Does It!

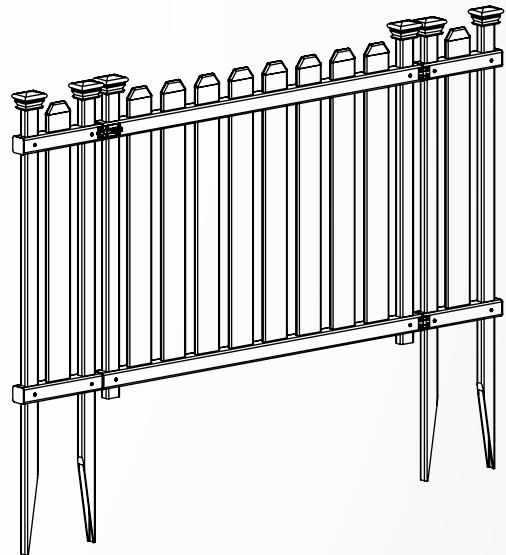
BELLA
PUPPY AND GARDEN
VINYL GATE KIT
(30½"H X 55½"W)

ASSEMBLY
INSTRUCTIONS
ZP19070

60 MIN

Approximate assembly time

Want to see a video on how to
assemble this product?
Scan the QR code



GENERAL INFORMATION



IMPORTANT

- + Check the inside of the larger pieces in your box for other materials packed inside.
- + When assembling components, place on a non-abrasive surface (i.e. shipping box) to avoid scratching.
- + We recommend an area approximately 5'x 8' for unobstructed assembling.
- + You should not need to use excessive force when assembling components.

MISSING OR DAMAGED PARTS?

VISIT OUR WEBSITE FIRST, SO WE CAN HELP YOU RIGHT AWAY!

Although great care has been taken to ensure proper packaging and handling of this product, occasionally problems occur. If you discover any missing, damaged, or defective parts, please visit our website to order replacement parts. If you experience any further trouble with your product, please contact our customer service department.

 parts.nychbrands.com

 support@zippity-outdoor.com

 **704-892-5222 / 877-234-6196**

Customer service agents are available to take calls weekdays from 9am-5pm EST. If you call outside of business hours, please leave a voicemail.

To help you quickly and accurately, please have reference item number **ZP19070** and the specific part name which can be found on page 4. It is helpful if you can provide the batch lot which is a stamped number inside the box.

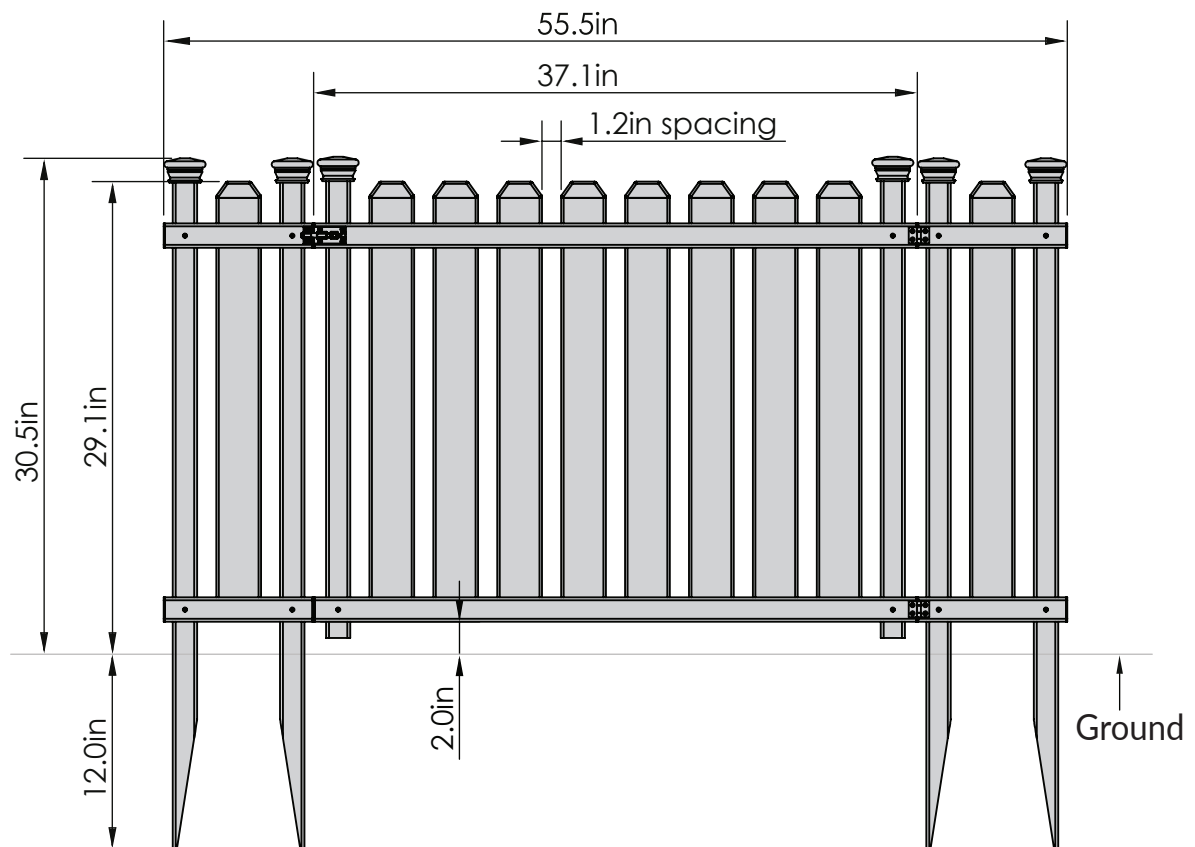
NEED ASSEMBLY HELP?

If you are having problems with the assembly or installation of this product, we are happy to assist you with the process, **so please give us a call at 704-892-5222 / 877-234-6196.**

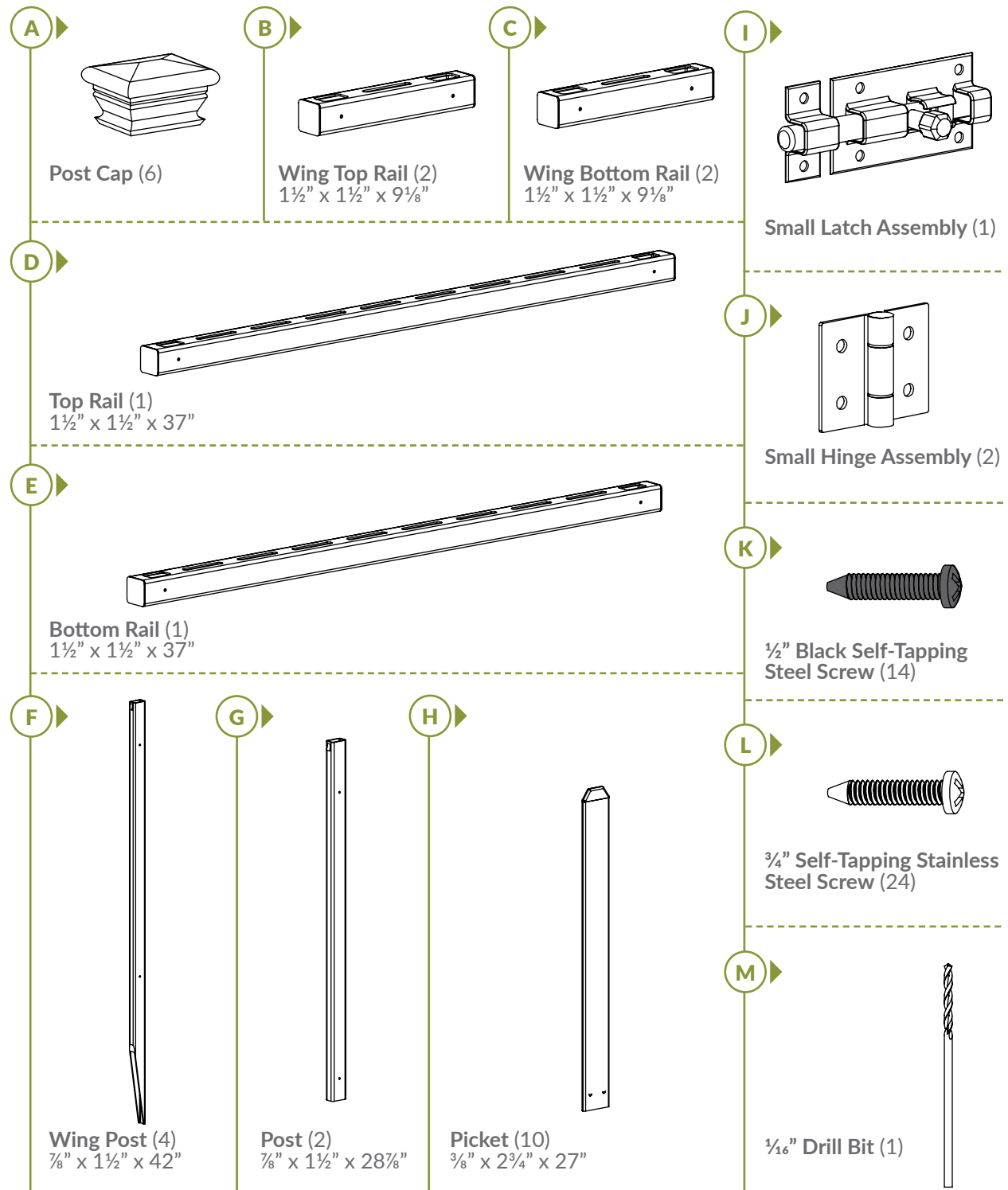
NEED TO RETURN?

If for some reason you need to return this product, please allow us to help resolve your issues first. If you still decide to return the product, **you will need to initiate the return from the company you originally purchased from.**

Detailed Product Dimensions & Specifications



STEP 1: LAY OUT MATERIALS

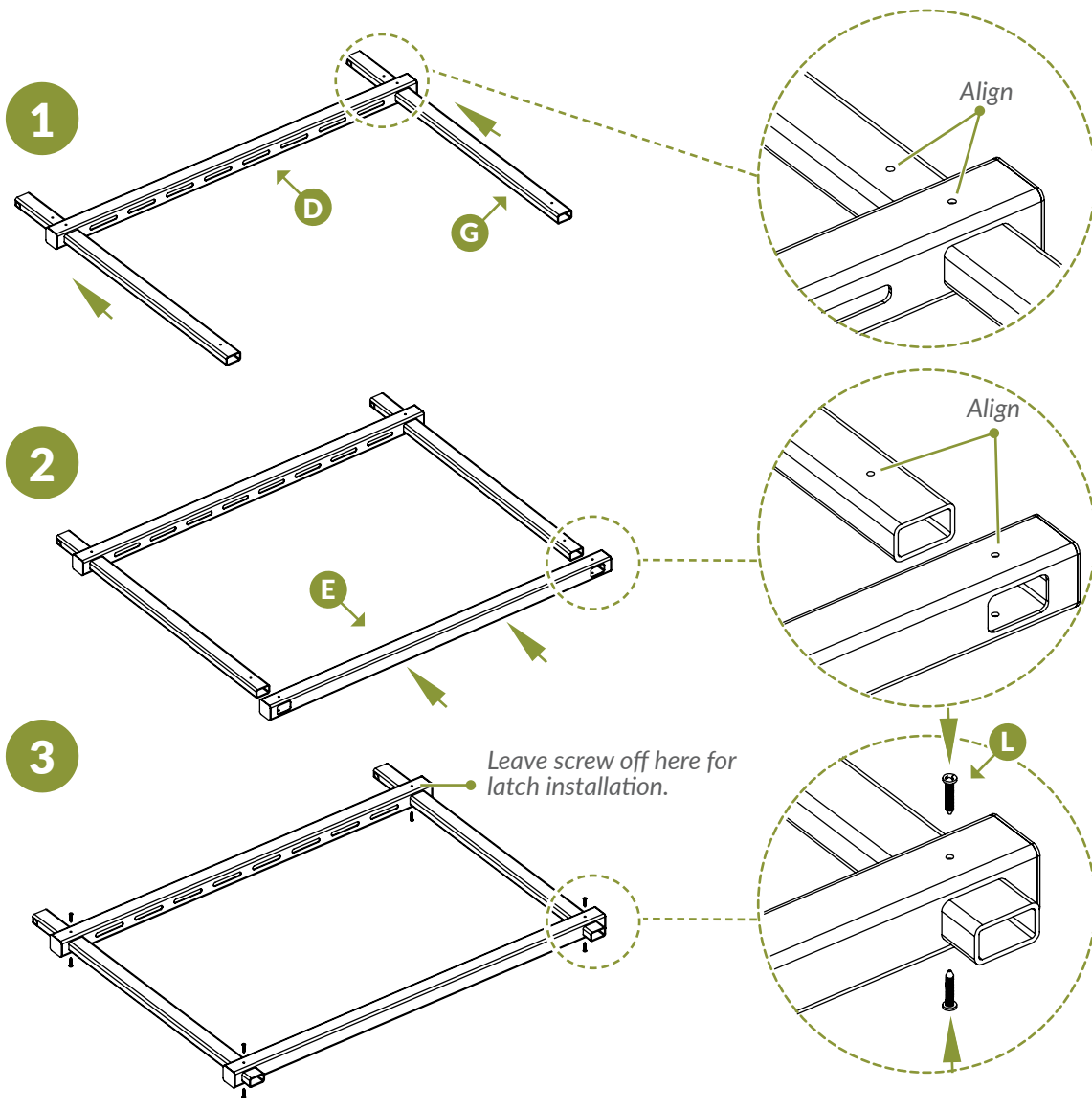


STEP 2: ASSEMBLE THE GATE FRAME

STEP 2.1 ▶

1. Insert the Top Rail (D) over the bottom of the Posts (G) until the pre-drilled holes in the rail and the top of the posts align.
2. Insert the Bottom Rail (E) over the posts until the pre-drilled holes in the rail and the bottom of the posts align.
3. Drive (7) total 3/4" Self-Tapping Steel Screws (L) into the pre-drilled holes on the front and back of the rails.

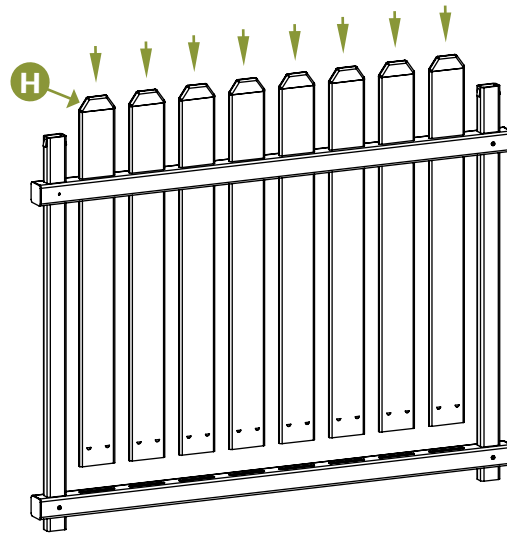
Note: It is recommended to lay the product on the floor or other flat surface for this step.



STEP 2.2 ▶

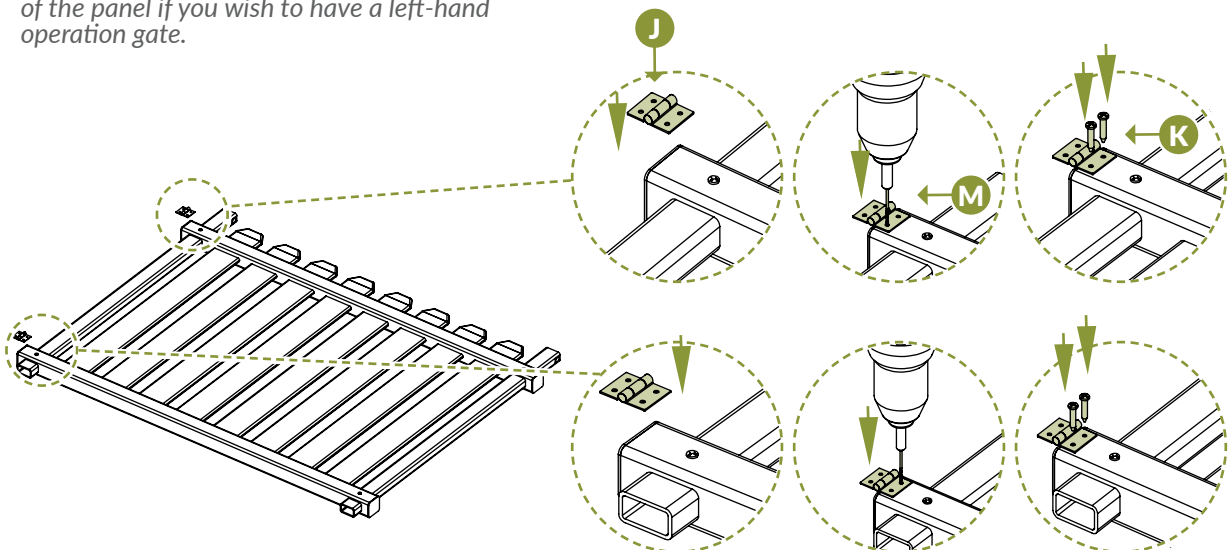
▶ Insert the Pickets (H) through the top and bottom rail.

Note: Tabs on the bottom of the pickets will lock the pickets into the bottom rail.

**STEP 2.3** ▶

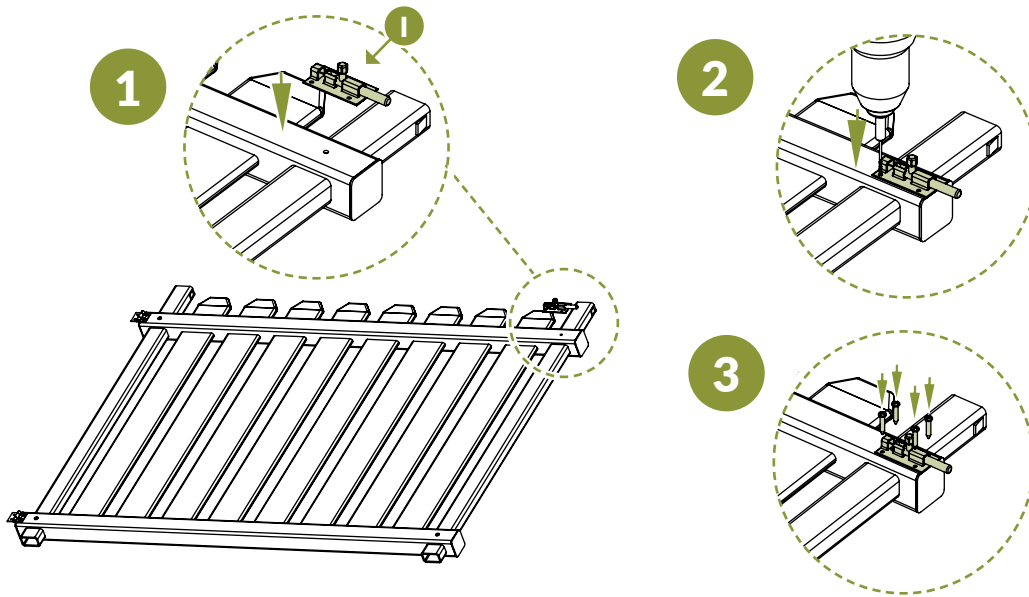
1. Place one Small Hinge Assembly (J) so the middle of the hinge is flush with the end of the top and bottom rail as shown below.
2. Use the included $\frac{1}{16}$ " Drill Bit (M) to pre-drill (4) total holes in the rails through the pre-drilled holes in the hinge.
3. Drive (4) total $\frac{1}{2}$ " Black Self-Tapping Steel Screw (K) into the rails to secure the hinges.

Note: Install the hinges on the right side of the panel if you wish to have a left-hand operation gate.

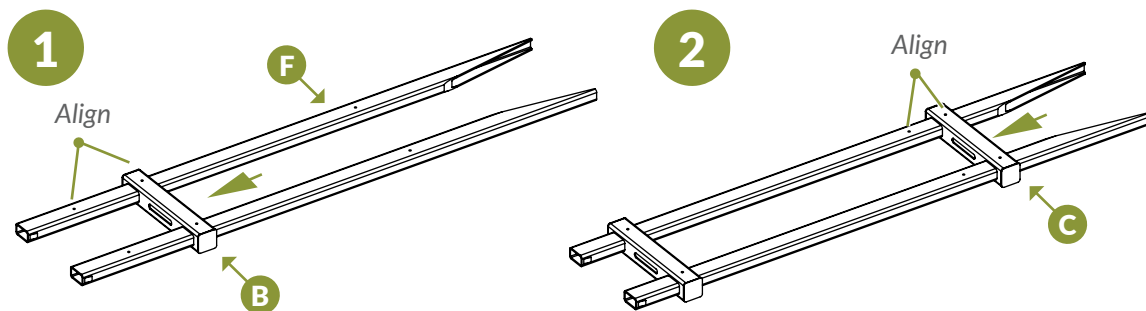


STEP 2.4 ▶

1. Place the Small Latch Assembly (I) so the end of the latch body is flush with the end of the top rail as shown below.
2. Use the included $\frac{1}{16}$ " drill bit to pre-drill (4) total holes in the top rail through the pre-drilled holes in the latch body.
3. Drive (4) total $\frac{1}{2}$ " black self-tapping steel screws into the top rail to secure the latch body.

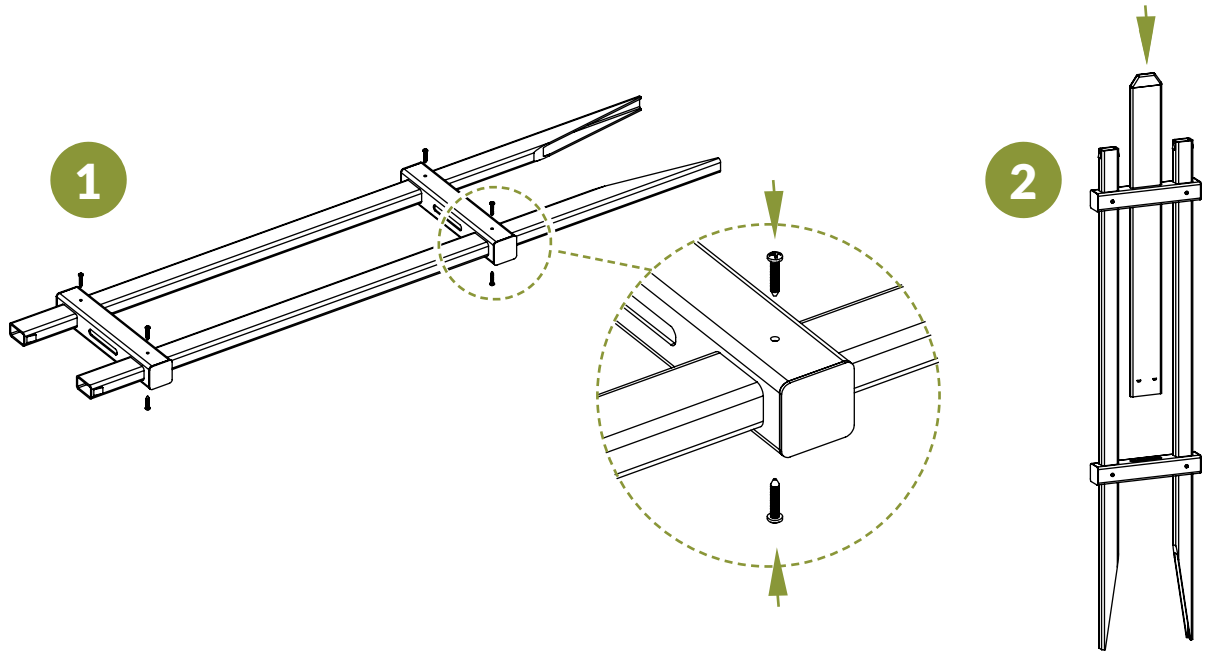
**STEP 3: ASSEMBLE THE GATE WINGS****STEP 3.1** ▶

1. Slide (1) Wing Top Rail (B) over the bottom of the Wing Posts (F) until the pre-drilled holes in the wing top rail and top of wing posts align.
2. Slide (1) Wing Bottom Rail (C) over the bottom of the wing posts until the pre-drilled holes in the wing bottom rail and bottom of wing posts align.

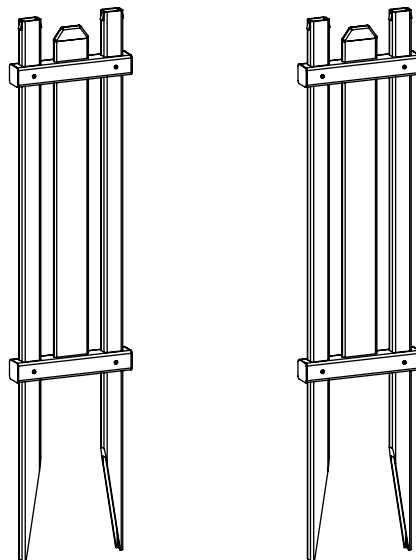


STEP 3.2 ▶

1. Drive (8) total $\frac{3}{4}$ " self-tapping stainless steel screws through the pre-drilled holes in the wings rails.
2. Insert (1) picket into the routed holes in the top and bottom rail until the tabs of the picket lock into the bottom rail.

**STEP 3.3** ▶

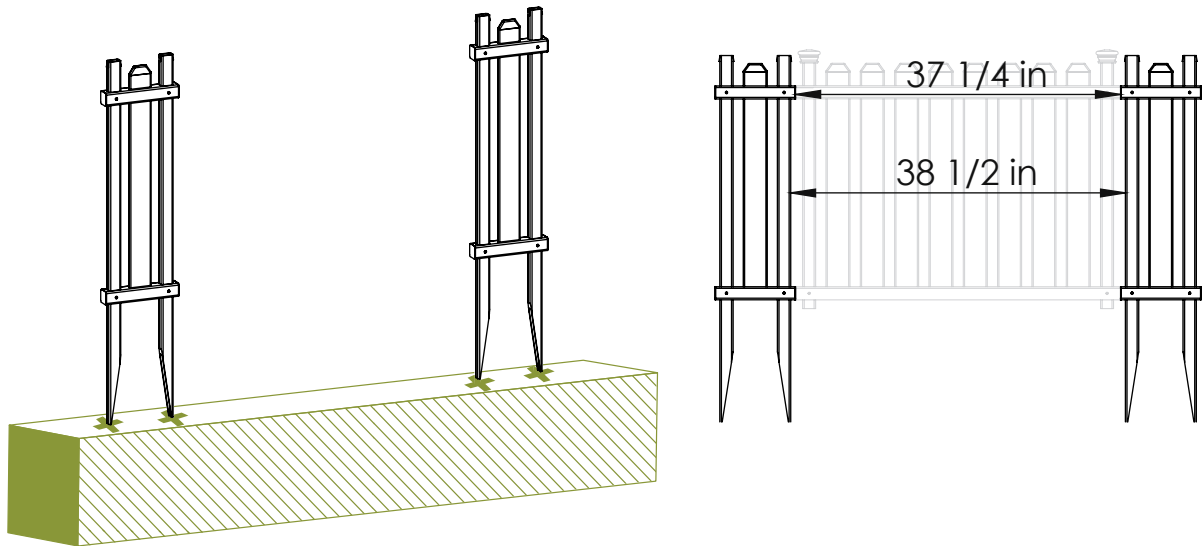
- ▶ Repeat Steps 3.1 - 3.2 to assemble the second gate wing.



STEP 4: INSTALL GATE WINGS INTO THE GROUND

STEP 4.1 ▶

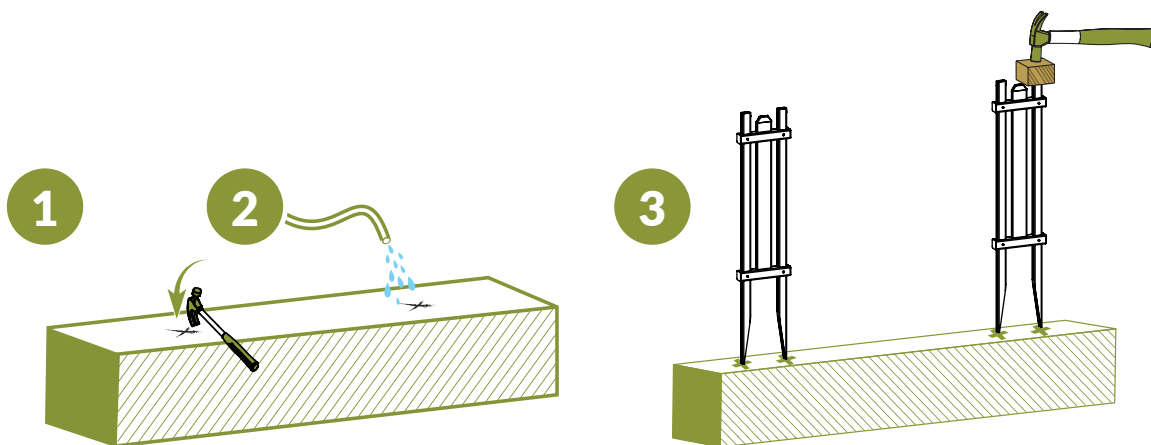
▶ Space the gate wings so that the ends of the rails are $37\frac{1}{4}$ " apart. The distance from the outside of wing post to outside of wing post should be $38\frac{1}{2}$ " as shown below.



STEP 4.2 ▶

▶ Attempt to push the wing posts into the ground at the marked locations. If your ground is too hard, follow these steps illustrated below:

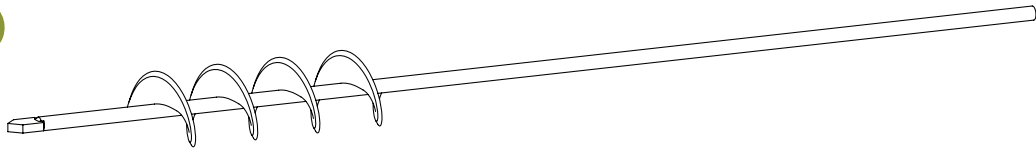
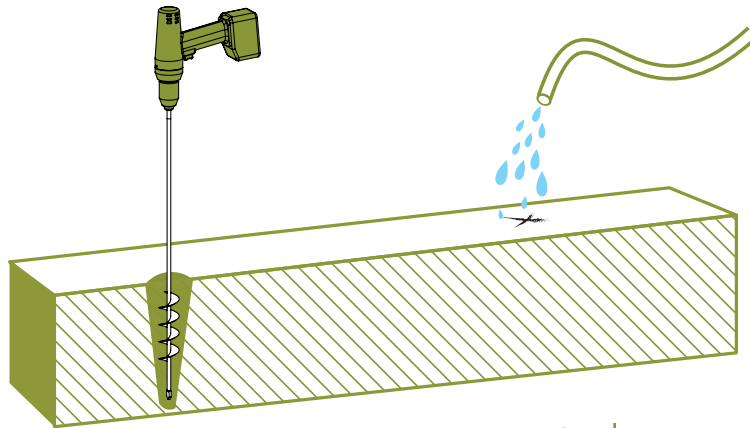
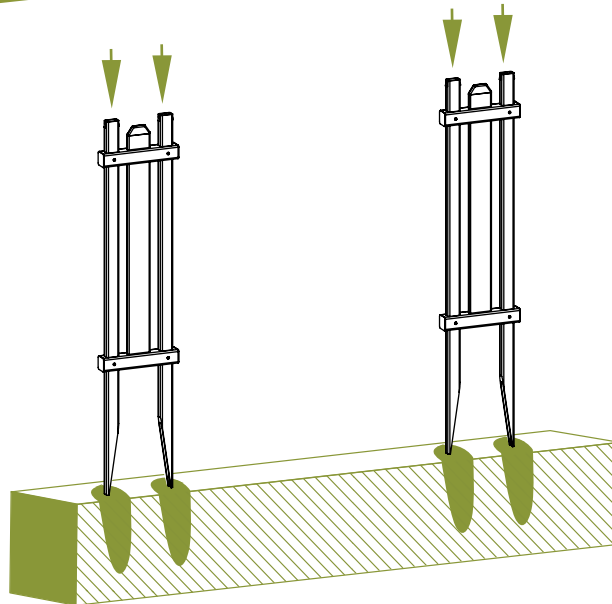
1. Loosen the top 6" to 8" of the ground using a claw hammer or similar tool.
2. Add water to soften the soil.
3. Use a block of wood to protect the top of the wing post and gently hammer each wing post into the ground until the bottom wing rails are roughly 2" above the ground.



STEP 4.3 ▶

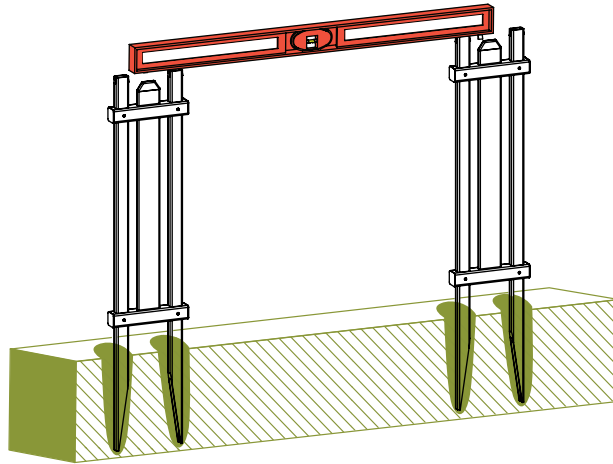
► **Optional in hard ground:** If your ground is too hard, please consider these options:

1. Use a 1¼" diameter auger bit (commonly used for planting tulips) as illustrated (\$15-\$20 on Amazon.com).
2. Drill a hole about 12" to 16" deep at the desired location, and fill the holes with water as illustrated.
3. Push the wing posts into the holes.

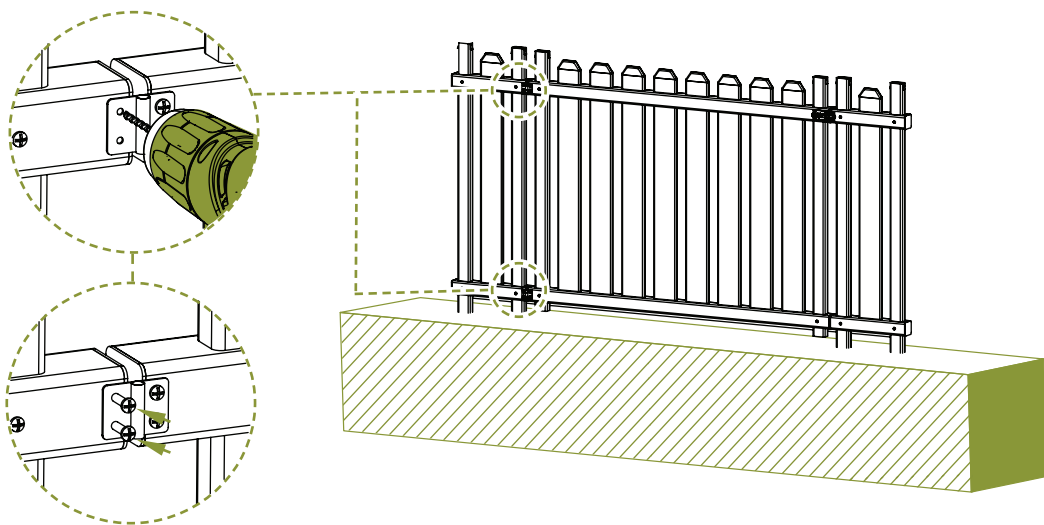
1**2****3**

STEP 4.4 ▶▶

▶ Level the assembled unit. Backfill and compact dirt around the base of each wing post to strengthen the unit.

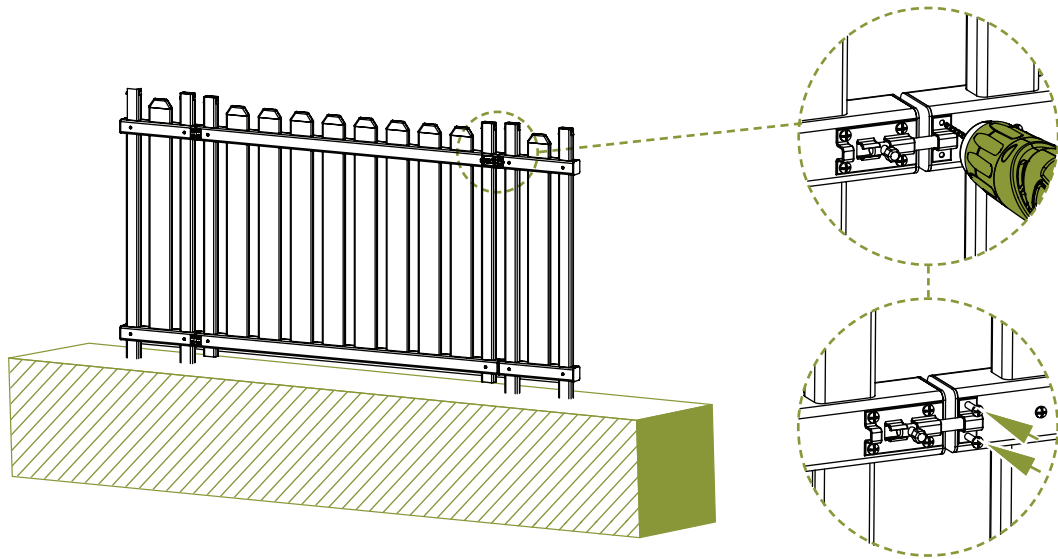
**STEP 5: INSTALL THE GATE HARDWARE****STEP 5.1** ▶▶

▶ Align the hinges against the wing rails of the gate wing as shown. Mark and pre-drill two holes for each hinge. Fasten each hinge with (2) ½" black self-tapping steel screws.

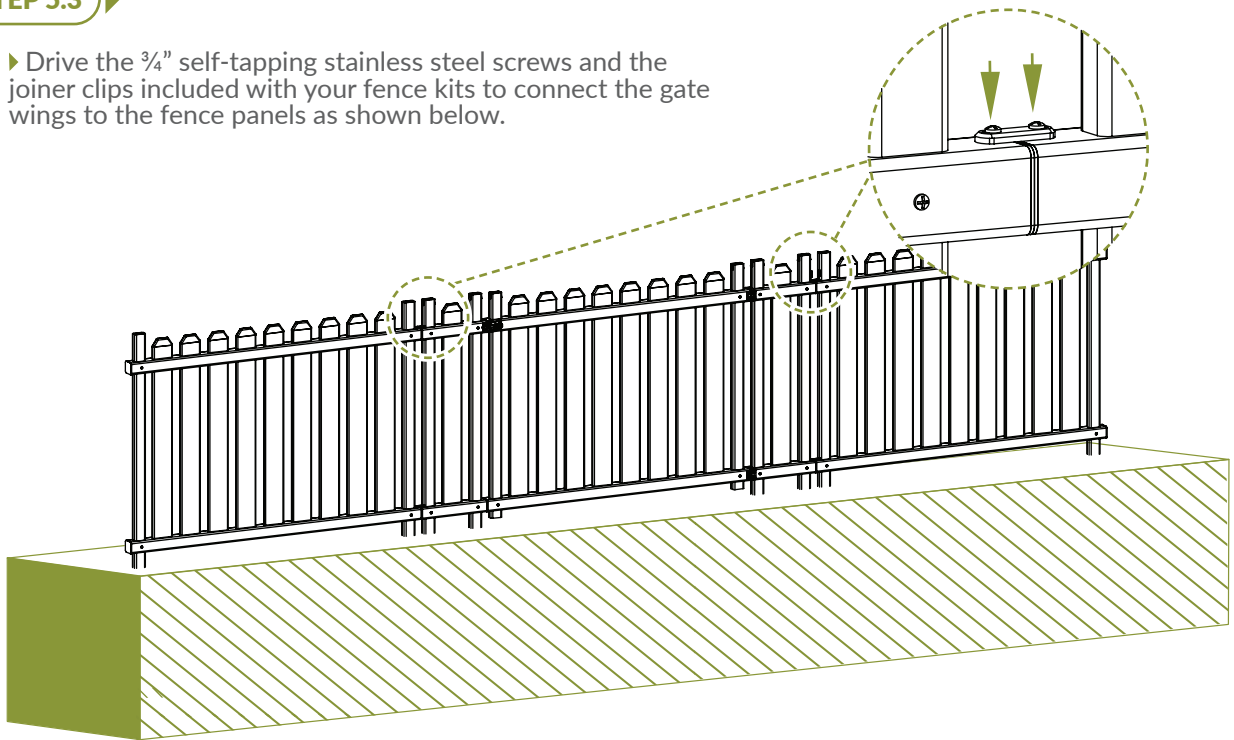


STEP 5.2 ▶

▶ Align the latch catch with the latch finger and pre-drill two holes into the wing top rail of the gate wing. Fasten with (2) ½" black self-tapping steel screws.

**STEP 5.3** ▶

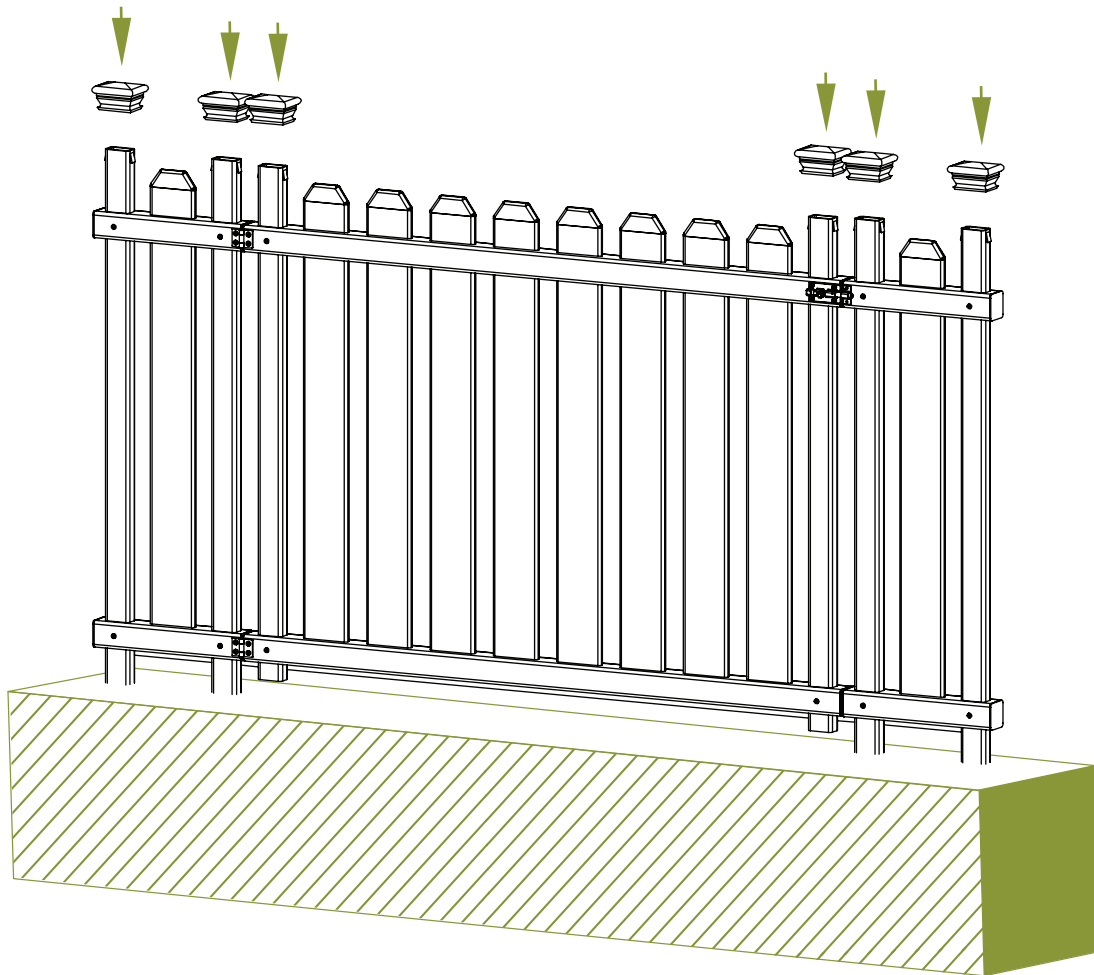
▶ Drive the ¾" self-tapping stainless steel screws and the joiner clips included with your fence kits to connect the gate wings to the fence panels as shown below.



STEP 6: INSTALL POST CAPS

STEP 6.1 ▶

- ▶ Insert (6) Post Caps (A) over the tops of the gate wing and gate panel posts.





ZIPPITY

Easy Does It!



6935 Reames Rd. Ste. K.
Charlotte, NC 28216



support@zippity-outdoor.com

704-892-5222
877-234-6196



WWW.ZIPPITY-OUTDOOR.COM